

# Beam Clamps, Straps, Clamps and Clamp Backs for Rigid Metal Conduit or IMC

NEC/CEC:  
Listed for Ordinary Locations

COMMERCIAL AND INDUSTRIAL FITTINGS: RIGID AND IMC CONDUIT FITTINGS

## Application

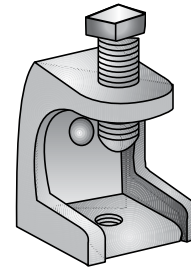
- Provide support for conduit hanging systems.

## Standard Materials

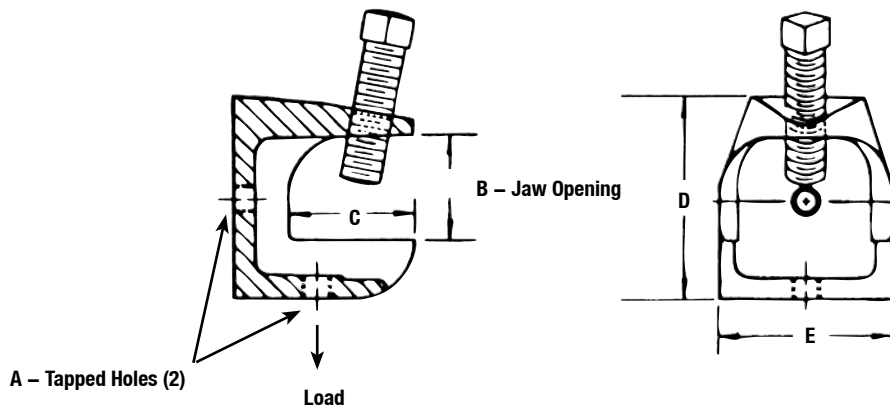
- Malleable iron clamp
- Steel screw, case hardened

## Standard Finishes

- Clamp - hot dip galvanized
- Screw - zinc electroplated



Type IS



A Tapped Holes	B Jaw Opening	Dimensions in Millimeters (Inches)			Max. Load kgs. (lbs.)	Catalog Number
		C	D	E		
1/4 - 20	23.9 (0.94)	22.4 (0.88)	41.4 (1.63)	25.4 (1.00)	152 (335)	IS-500
10 - 24	23.9 (0.94)	22.4 (0.88)	41.4 (1.63)	25.4 (1.00)	152 (335)	IS-509
5/16 - 18	23.9 (0.94)	28.7 (1.13)	46.0 (1.81)	38.1 (1.50)	238 (525)	IS-501
3/8 - 16	25.4 (1.00)	35.1 (1.38)	52.3 (2.06)	50.8 (2.00)	340 (750)	IS-502
1/2 - 13	28.7 (1.13)	42.9 (1.69)	57.2 (2.25)	66.8 (2.63)	408 (900)	IS-503